



University of
BRISTOL

Global Transfer Programme



Transfer Plan

UOB & HUST
Epidemiology

2024/25

bristol.ac.uk/transfer



Unlock your future

Renowned for its outstanding academic environment, Bristol is the place to reach your potential.

The partnership between Huazhong University of Science and Technology and the University of Bristol allows talented students to further their studies in the UK.

This document, **your Transfer Plan**, provides you with all the essential information you need to know about our partnership.



Contents

Unlock your future	2
Welcome to Bristol	3
Global Transfer Programme	4
Transfer Opportunities	5
Why study at Bristol	6
Your career starts here	8
City Life	9
Accommodation	12
Student Life	13
Tuition Fees	16
Scholarships and Bursaries	17
Entry requirements	18
How to apply	19
Support before you arrive	20
Get in touch	21





Welcome to Bristol

The University of Bristol enjoys an international reputation for high-quality education and research. From our beginnings in 1876 through to today, the work of our staff and students resonates across the world.



Global reputation

The University of Bristol is a world-class institution, and your Bristol degree will be impressive to future employers, as the University enjoys fantastic subject rankings in many areas of study. At Bristol, you'll be part of an academic community with a reputation for producing high-achieving graduates.



International student community

With students from more than 150 countries around the world, you'll enjoy a multicultural study experience at the University of Bristol. You'll meet people from many corners of the globe, and benefit from learning about diverse cultures and different perspectives.



Inspired by research

As a member of the Russell Group and the Worldwide Universities Network, Bristol is among the UK's leading research universities. Our curriculum is informed by the latest research, and our taught degrees are led by expert academics working at the forefront of their subjects

55

Ranked 55th
in the world

(QS World University
Rankings 2023)

9

Ranked 9th
in the UK

(QS World University
Rankings 2023)

10

Top 10 in the UK
for employability

(QS Graduate Employability
Rankings 2021)



Global Transfer Programme

Our partnership with Huazhong University of Science and Technology as created the Global Transfer Programme.

The Global Transfer Programme provides you with several advantages.

Guaranteed entry

When you meet our **academic and English language entry requirements**.

Bespoke support

The International Partnerships Team are here to help you before, during and after your time at Bristol.

Special events

We will organise special social events and cultural activities, just for our partnership students.

Exclusive Scholarships

You can access exclusive scholarships/ bursaries only available through this partnership.

Clear requirements

Understand exactly what grades you need to achieve to secure your place at Bristol.

Network of partner universities

You will join our network of other partner universities, meeting partner students from all around the world.

38

38 leading universities around the world are part of the Global Transfer Programme



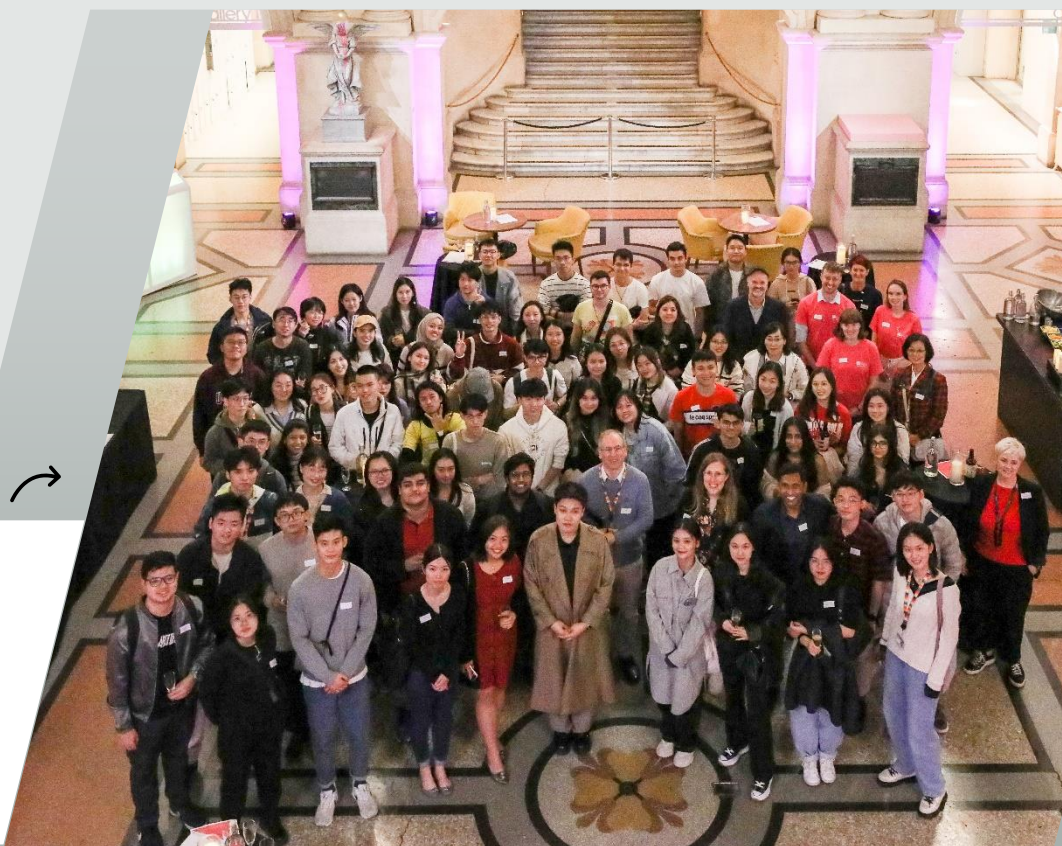
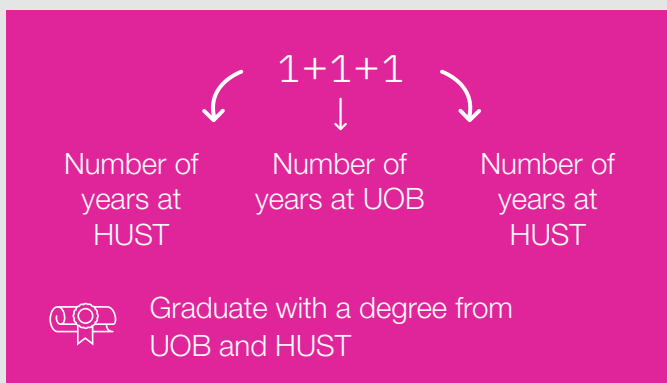
Transfer Opportunities



Transfer pathways

Transfer from your current degree at HUST onto a related degree at Bristol.

Structure	Degree at HUST	Degree at UOB
1 + 1 + 1	MSc Public Health	MSc Epidemiology



Meet our 2022/23 cohort of Global Transfer Programme students



Why study at Bristol

Bristol's world-class teaching encourages students to become independent, confident, critical thinkers. Providing you with the skills you need to become leaders in your chosen careers.



Inspired by Research

As a member of the Russell Group and the Worldwide Universities Network, Bristol is among the UK's leading research universities. Our curriculum is informed by the latest research, and our taught degrees are led by expert academics working at the forefront of their subjects.

Our Faculty of Health Sciences

Our Faculty of Health Sciences is committed to providing the highest standards of teaching in an excellent research environment. We have world-leading researchers, dedicated teachers and clinicians, talented students and excellent facilities. Faculty researchers have been at the forefront of many treatments, discoveries and healthcare programmes that are now in use around the globe.



Discover what units you'll study using our [Programme Catalogue](#) to search for your degree

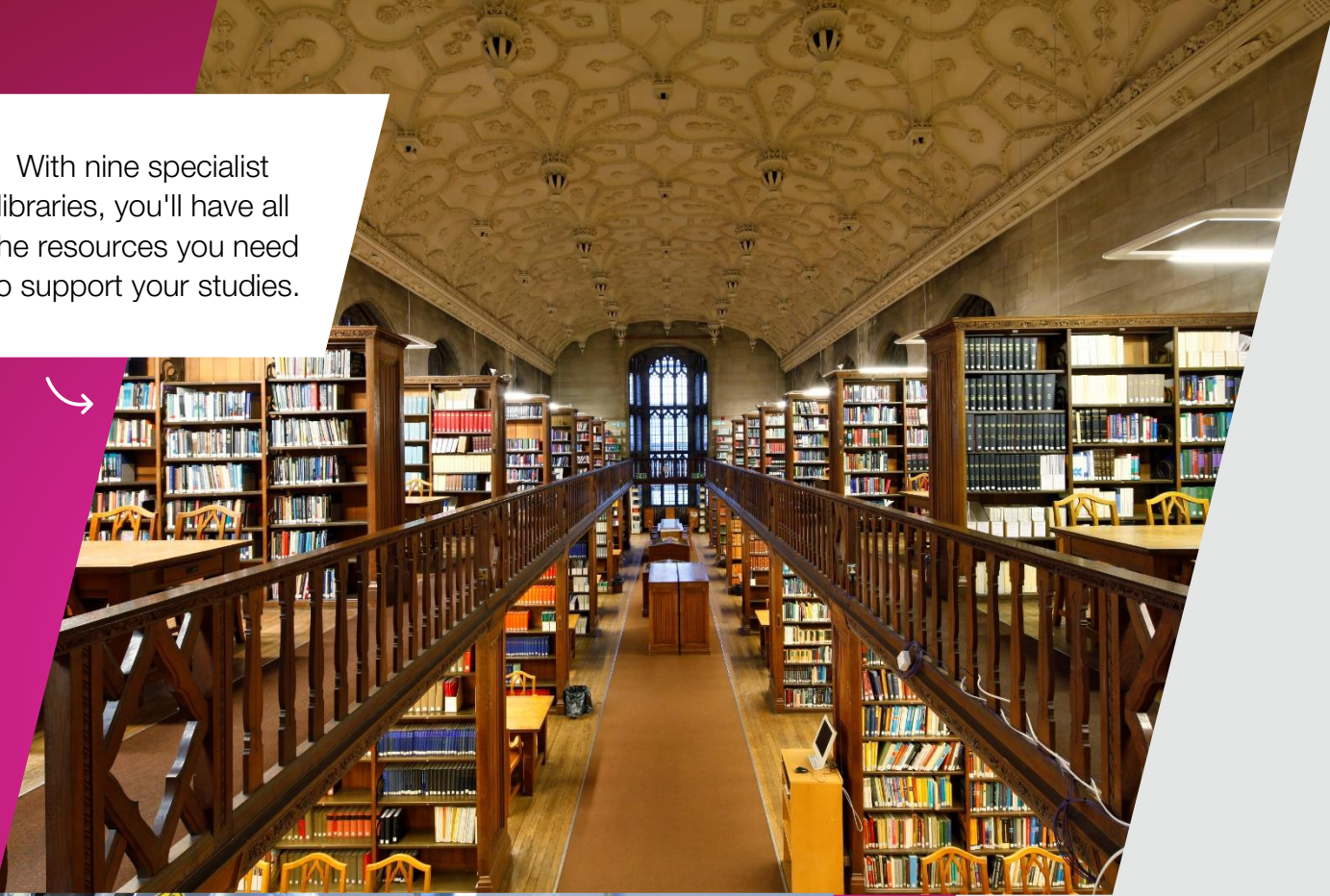
94 More than 94% of our research outputs were rated as world leading or internationally excellent. (REF 2021)

26 26 subjects highly ranked in the world's top 100 (QS World Subject Rankings 2022)

George (Greece)

'Bristol is one of the top-ranked universities in the world, and you can feel that from the first minute of being here. Everything from the facilities to the lectures is designed according to top academic standards.'

With nine specialist libraries, you'll have all the resources you need to support your studies.



Our state-of-the-art course facilities will help you succeed in your degree.



You'll find study spaces across the University, for quiet study, group working, or in a more social setting.





Your career starts here

We prioritise your career, with a range of opportunities to help you unlock your future and get the job of your dreams.

Bristol graduates are highly sought after by employers in the UK and overseas. The University is in the UK's top ten for employability in the latest QS Graduate Employability Rankings, scoring particularly highly on employer reputation.



What can I do with my degree?

Graduates from our MSc course in Epidemiology have the knowledge and skills needed to work as a researcher or systematic reviewer in a wide range of settings, including universities, research institutes, government agencies, charities, pharmaceutical companies, and other private and public organisations that collect and analyse health-related data.

Graduates will also be well placed to apply for a PhD in a range of population health research topics.

Further study at Bristol

There are opportunities at Bristol to continue your studies once you have completed your degree in our master's and PhD programmes. As a Bristol alumnus, you will receive a 25% tuition fee discount. [Find out more online.](#)

Learn more about what Bristol graduates from your course go on to do after graduation:

Career options


Cindy (Hong Kong)

'I really like the Careers Service. There are talks and workshops on different types of employability skills, and employer presentations where you can ask questions directly to your dream company or build connections.'




City Life

A beautiful harbour-side city known for its creative flair, Bristol is bursting with culture. With its extraordinary art, live music and shopping, living in Bristol is an experience unlike any other. The Sunday Times recently voted Bristol the best place to live in Britain.



The Bristol experience

Bristol's fascinating history and vibrant culture have given it a unique, artistic and forward-thinking character. This explains why the city has been named 'European Region of the Future' by the Financial Times, as well as Britain's most musical city by the Performing Rights Society.



Amazing art

Walking around Bristol, you can find all kinds of original and beautiful art. You will be struck by the dramatic street art and colourful architecture. The city is home to globally renowned street artist, Banksy, and many of his greatest works. Bristol also hosts Europe's largest street art festival, called Upfest.



Something for everyone

Whatever your interests are, Bristol has something for you. Watch a performance at the Bristol Old Vic, one of the UK's oldest working theatres, or explore some of Bristol's many outstanding museums and art galleries. At the trendy waterfront docks you can experience stylish bars, live music, comedy clubs, restaurants and much more. [Learn more about Bristol online.](#)

 Around
our
city



The Clifton Suspension Bridge, built in 1864, is a spectacular sight. The Bridge draws thousands of tourists a year.



College Green is a popular destination for students all year round. A 10-minute walk from the centre of campus. Bristol is home to over 450 green parks and spaces, proportionally more than any other UK city.



 Things to do



Bristol's **Harbourside** is found in the centre of the city, filled with restaurants, bars, shops and hotels.



The **Bristol International Balloon Fiesta** is Europe's largest meeting of hot air balloons, taking place every August.



The **Victoria Rooms** is home to our Department of Music. The Bristol landmark first opened its doors in 1842.



Accommodation

Our wide range of residences ensures you find a safe and supported home here.

Guaranteed accommodation

We guarantee a place in our residences during your first year at Bristol for all Global Transfer Programme students. You should apply online for university-by the **30 June 2023** to receive the guaranteed offer.

For full conditions and how to apply, visit our [accommodation webpages](#).

A variety of residences

Our [Student Residential Villages](#) offer ready-made communities to help you settle into life in the UK. Across these villages, you can find a range of residences to suit a variety of tastes and budgets, from shared Georgian townhouses on colourful Clifton to modern flats in the city centre.

Security and support

Our residences are self and welcoming environments, with security and assistance from specially trained staff. Our friendly Residential Life team is here to provide expert help and support to students living in University residences.

Typical costs

You can choose from self-catered residences – where you have access to cook for yourself – or catered accommodation, which includes two meals a day. Accommodation costs vary according to location, facilities, and room type. To get an indication of costs, take a look at our [accommodation webpages](#).





Student Life

With our outstanding facilities, active Student's Union, and extensive support network, at Bristol you can enjoy the best of student life.



Get involved

Every student at the University of Bristol is a member of the Student's Union (SU). The SU organises events, represents your views and runs more than 400 clubs and societies for different interests and hobbies. You will also be able to join the International Student's Network which hosts events and runs campaigns.



Sport, exercise, and health

Bristol's first-rate sports and fitness facilities on campus will help you kickstart and maintain a healthy and active lifestyle during your time here. Our memberships give you access to our gym, fitness classes, studios and swimming pool. You can also play sport socially or competitively by joining one of 70 student sports clubs on offer and there is support if you play professionally.



Your community at Bristol

More than 4,300 students from China currently study at Bristol, and we would love for you to join us. Our student clubs include the Chinese Society and the Chinese Students' & Scholars' Association.



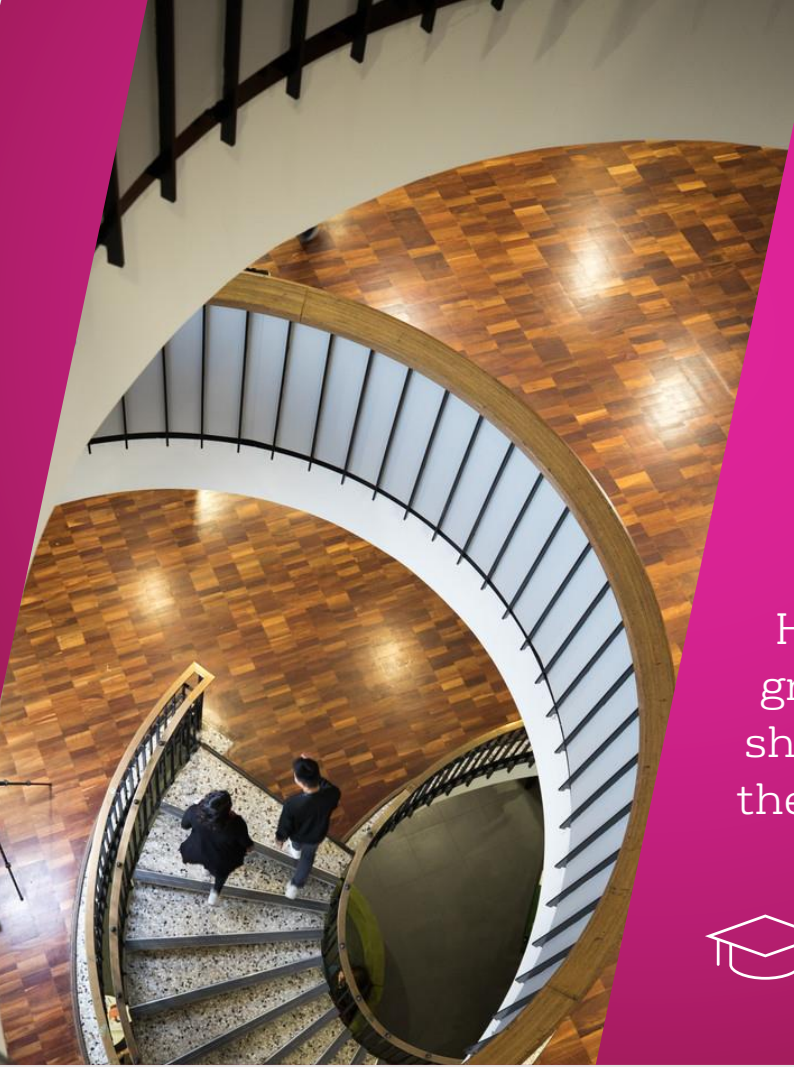
The Global Lounge organises a range of social events and cultural activities, welcoming all students to our City and campus.



Join our Language Cafes to practice your language skills in a fun and friendly environment. Beginners are welcome.

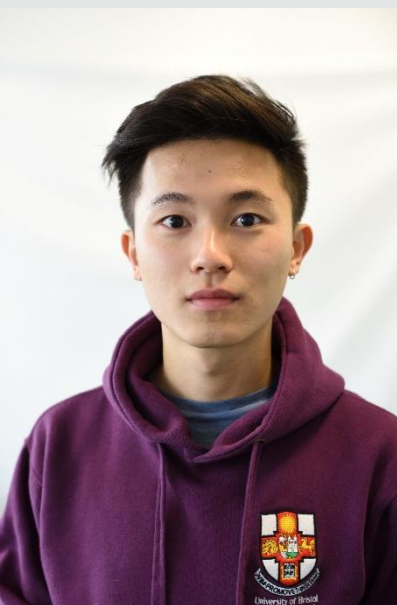


The Global Lounge enjoys celebrating the traditions and festivities that represent our community of students.



Our past student experiences

Hear from our graduates as they share memories from their time at Bristol.



↩ **Aewis (Malaysia)**

'Bristol was named as the best city to live in the UK some time ago - I guess that says it all. Personally, my favourite thing about Bristol is that it is so happening - whether it's night life, street festivals, or international festivals (such as the Balloon Fiesta).'



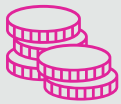
Gaurav (India) ↗

'The most useful support for me has been from the Careers Service. They organise multiple events and workshops, some are even catered specifically to international students to help them attain a job and Tier-2 visa in the UK. The various services it provides has helped me develop my skills in a meaningful way.'

Annie (China) ↘

'The lecturers are nice. Every time I send an email to ask questions they reply in good time. I also like the tutorials and Maths Cafés, where you have more time to talk about homework questions – I found that really useful.'





Tuition Fees

Studying for your degree is an investment in your future, and we understand that financing your studies requires important decisions.

All students who apply through this partnership will receive an exclusive scholarship. **The UOB-HUST Strategic Partner Scholarship will reduce your tuition fee by 10%.**

You do not need to apply for the scholarship, it will be awarded when you apply. However, if you apply using an agent, you won't be eligible for a scholarship.

Your tuition fees

The tuition fees have had the Partner Scholarship applied.

Degree at UOB	Tuition fee for 2024/25
MSc Epidemiology	£28,170

Tuition fees will rise by a small amount each year to account for inflation. You should budget for an annual increase of 8%.



Cost of living

Your other living expenses will depend on your way of life. The cost of living in Bristol is around 25% cheaper than in London. As a guide, most students spend in the region of £9,000 to £15,000 a year on living expenses, including accommodation, although you may spend more depending on your housing choices and lifestyle.



Scholarships and Bursaries

We want to welcome the brightest minds to our campus and offer several scholarships to support our students.

Global Transfer Bursary

The Global Transfer Bursary is **exclusive** for students from our partner institutions who apply via the Global Transfer Programme. The award of £3,000 is to be used towards living costs to support you as you study at the University of Bristol.

Think Big Scholarships

Our Think Big Scholarship Programme offers a range of scholarships, exclusive to international students, that can help fund your tuition fees. Awards range from £6,500 to £26,000 which are awarded for each year of study at Bristol.

You may also be eligible to receive a £3,000 living cost bursary during your first year of study.

How to apply

To apply for the bursary or scholarships, you need to already have applied to study at the University of Bristol via the Global Transfer Programme. Find out how to [submit your application on our website](#).



You will only submit one application. We will then automatically consider you against all different types of financial support, including the Global Transfer Bursary and the Think Big Scholarship Programme.

You are only able to receive one scholarship/fee discount. If you are shortlisted for more than one scholarship/fee discount, you will automatically be awarded the higher amount. The Global Transfer Bursary is not considered a scholarship, which means you can receive both the bursary and a scholarship.



Entry requirements

As part of the Global Transfer Programme, we have set clear entry requirements.

To transfer to Bristol, you must meet our academic and English language requirements.

Academic

- You must achieve a **minimum grade/CGPA of 80%** in your degree.
- You must study achieve 80% in a Mathematics unit.

English language

- You must achieve the requirements of **Profile B (PG)**:
 - IELTS Academic or IELTS Indicator (7.0 overall with 6.5 in all skills)7.0 overall, minimum of 6.5 in all skills
 - TOEFL iBT or TOEFL at Home (95 overall with R22, L21, S23, W24)

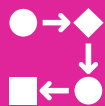
We also accept a variety of other qualifications. Visit our website for more information.



You do not need to have met these requirements when you apply.

You will need to provide evidence that you have reached the required English language level, and our academic requirements when you apply for your UK visa. You will normally apply for your visa in July.

If you are struggling to meet our English language requirements **you can complete our Pre-Sessional Programme**. This allows students to spend their summer improving their English language and academic skills before starting their degree at Bristol.



How to apply

Our simple online form makes it easy to apply for the Global Transfer Programme.

1



Research

Learn more about the programme at Bristol and studying in the UK. Book a chat with the team if you have any questions.

2

Notify

Talk to your home university and let them know you would like to apply to the partnership.

3



Apply

You must apply by the **31 May 2024**. On the application form, choose your current institution and the course you would like to apply for from the drop-down options.

4

Decide

You will need to accept your offer within two weeks. Your place is held until you provide your qualifications later in the summer.



Apply online:
bristol.ac.uk/transfer



Support before you arrive

Settling into a new city can be one of the most exciting partners of university life. Different teams from across the University are here to help.



International Partnerships team

The International Partnerships team are here to support you every step of the way during your journey to Bristol. Join one of our events, book onto one of our drop-in sessions, or send us an email with any questions you have.

 [Get in touch](#)



Pre-session courses

Our 10-week and 6-week pre-session courses offer students the best possible preparation for their studies at Bristol. Our course will provide the academic and English language skills you need to succeed. Courses are only available to offer holders from the University of Bristol.

 [Learn more online](#)



Student visa service

International students coming to the UK to study full-time must apply for a student visa. Our dedicated Student Visa Services team is available to help you from the moment you accept an offer, through to your graduation, and plenty of information online to help you throughout the process.

 [Learn more online](#)



Get in touch

We want to hear from you. If you have any questions or would like someone to talk to about the partnership, you can talk to us.



The team at Bristol

We are here to help you on your journey to Bristol

Rachel



Susanna



Gabrielle



Michael



Mandy

Contact us

Get in touch with questions

Email: global-transfer-students@bristol.ac.uk

Talk to us on WeChat:



Upcoming events and visits

We organise a series of presentations, webinars and activities with your university each year to share more details about our partnership.

[Visit our website for more details.](#)

Key contact at HUST

You can talk to the following colleague at your university about our partnership:

Lu Yizhong

luyizhong@hust.edu.cn



Thank you

We hope to welcome you to Bristol soon!

Stay connected:

✉ global-transfer-students@bristol.ac.uk

🌐 bristol.ac.uk/transfer